



## SpectraMove (Windows Only) Read Me

### **Introduction**

SpectraMove is a small utility which allows Spectrasonics users that work within Windows to move Spectrasonics Virtual Instruments Data files to a different location on an internal or external hard drive, or repair their registry entries within Windows 98, ME, 2000 and XP Home or Professional.

### **Move & Repair Functions**

The SpectraMove "Move" function is necessary in situations where you wish to change the location of the core library data file (.dat file). If you wanted to create a "dedicated storage drive", SpectraMove will allow you to "move" the .dat file correctly, preserving important registry entries.

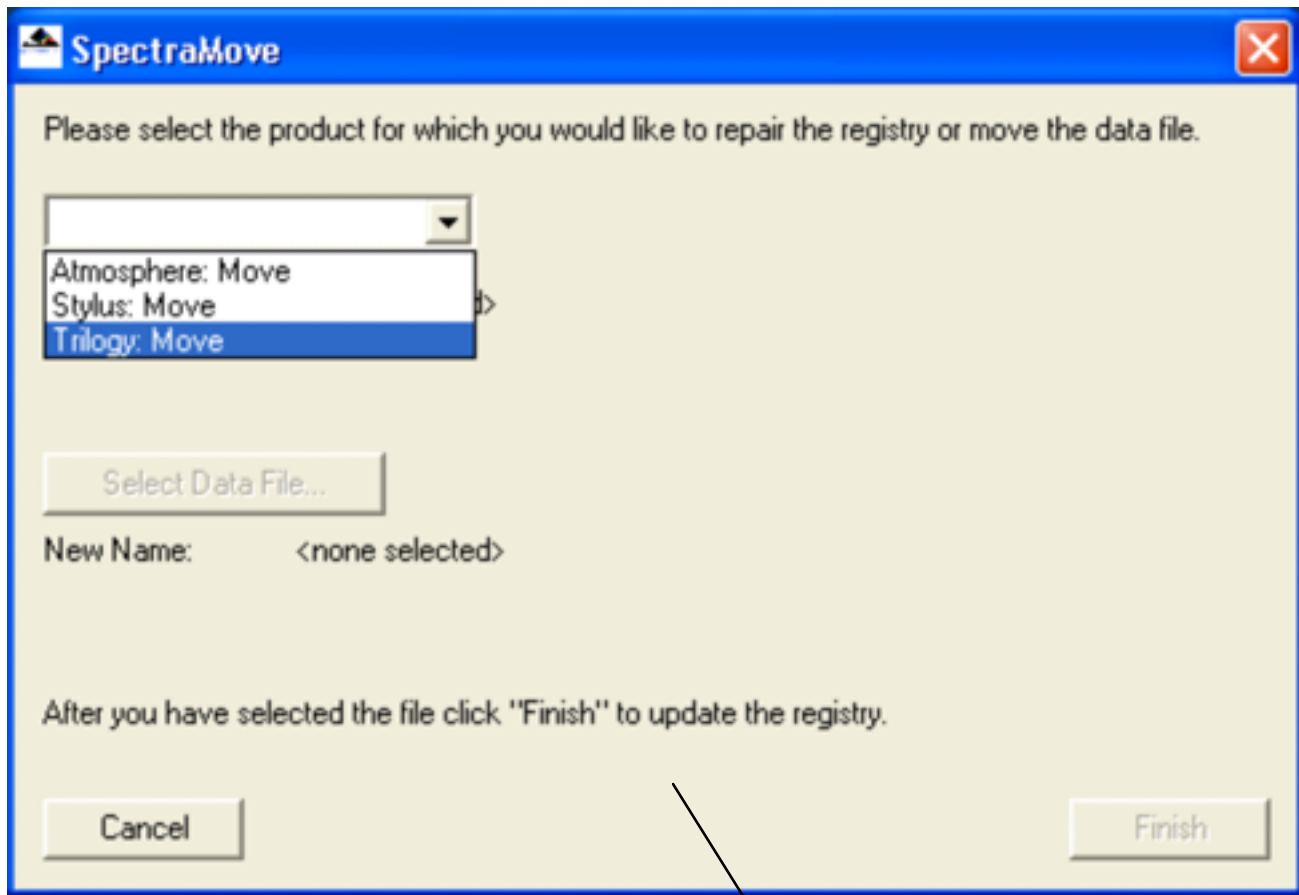
The SpectraMove "Repair" function will solve situations where a Spectrasonics VI is unable to locate it's data file due to corruption of a registry entry.

### **What about Macs?**

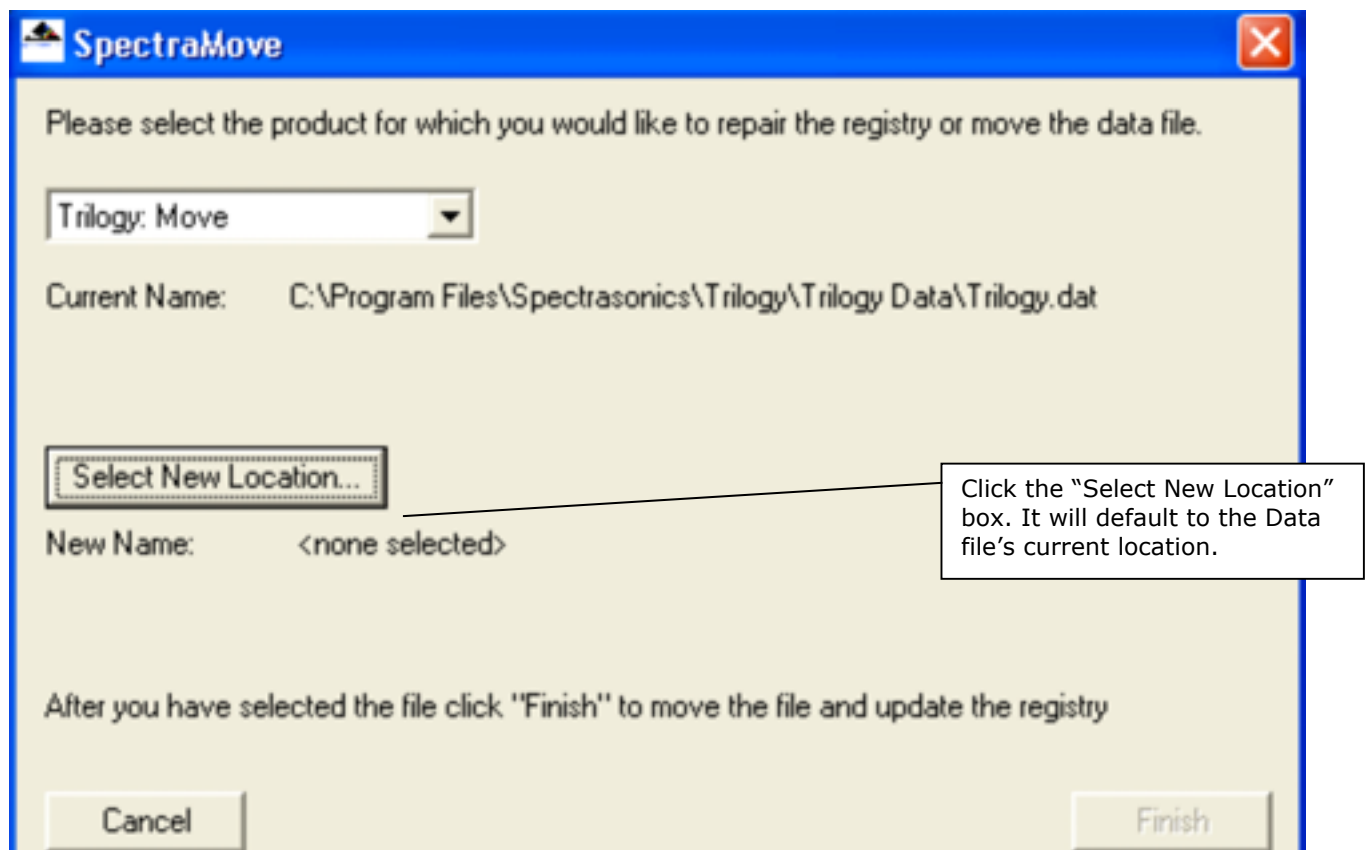
SpectraMove is designed for use within Windows and is not compatible or necessary for Macintosh computers. To relocate the .dat file on the Macintosh platform you can simply either Drag the .dat file to the new location, or place an alias of the .dat file in the directory where your plug-in resides. Please see your User Guide for more Mac information.

**WARNING FOR MAC USERS:** Mac users new to a Windows environment need to be aware that on a Windows PC it won't work to simply drag the .dat file manually to a new location as would be normal on a Mac. Windows registries will not get updated if this type of manual operation is performed, and the plug-in will not be able to locate the .dat file presets.

## Moving Data files with SpectraMove



Double click the SpectraMove icon to open this dialogue. Choose the Data file you wish to move.



## Choose New Location For Spectrasonics Data file

Save in: Local Disk (C:)

My Recent Documents

Desktop

My Documents

My Computer

- Cakewalk Projects
- dell
- Desktop Icons
- Documents and Settings
- I386
- My Music
- Program Files
- WINDOWS
- WUTemp

Select the new desired location. In this example, we've chosen the Root Directory of Drive C. Click "Save".

File name: Trilogy.dat

Save as type: Data Files

Save Cancel

**SpectraMove**

Please select the product for which you would like to repair the registry or move the data file.

Trilogy: Move

Current Name: C:\Program Files\Spectrasonics\Trilogy\Trilogy Data\Trilogy.dat

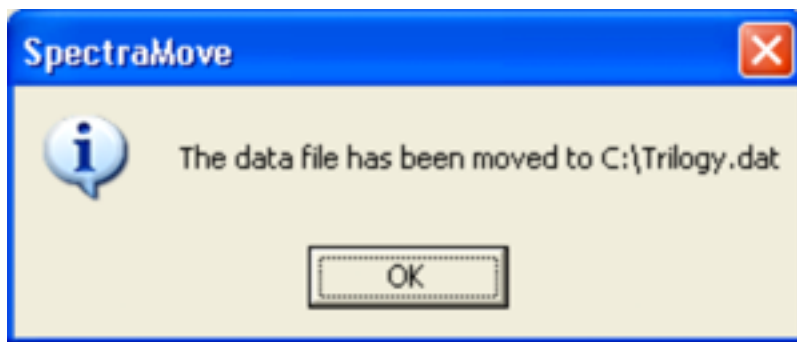
Select New Location...

New Name: C:\Trilogy.dat

After you have selected the file click "Finish" to move the file and update the registry

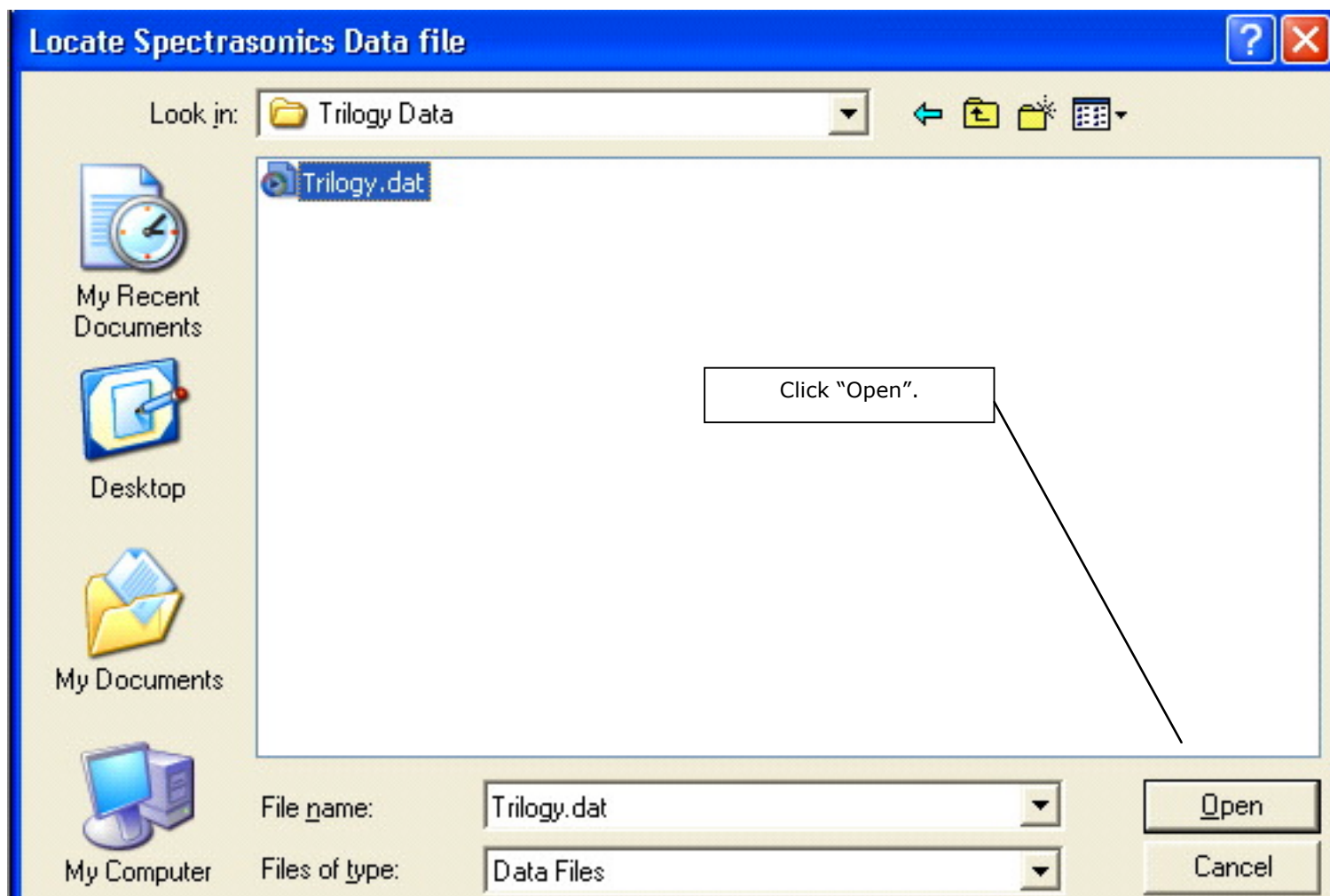
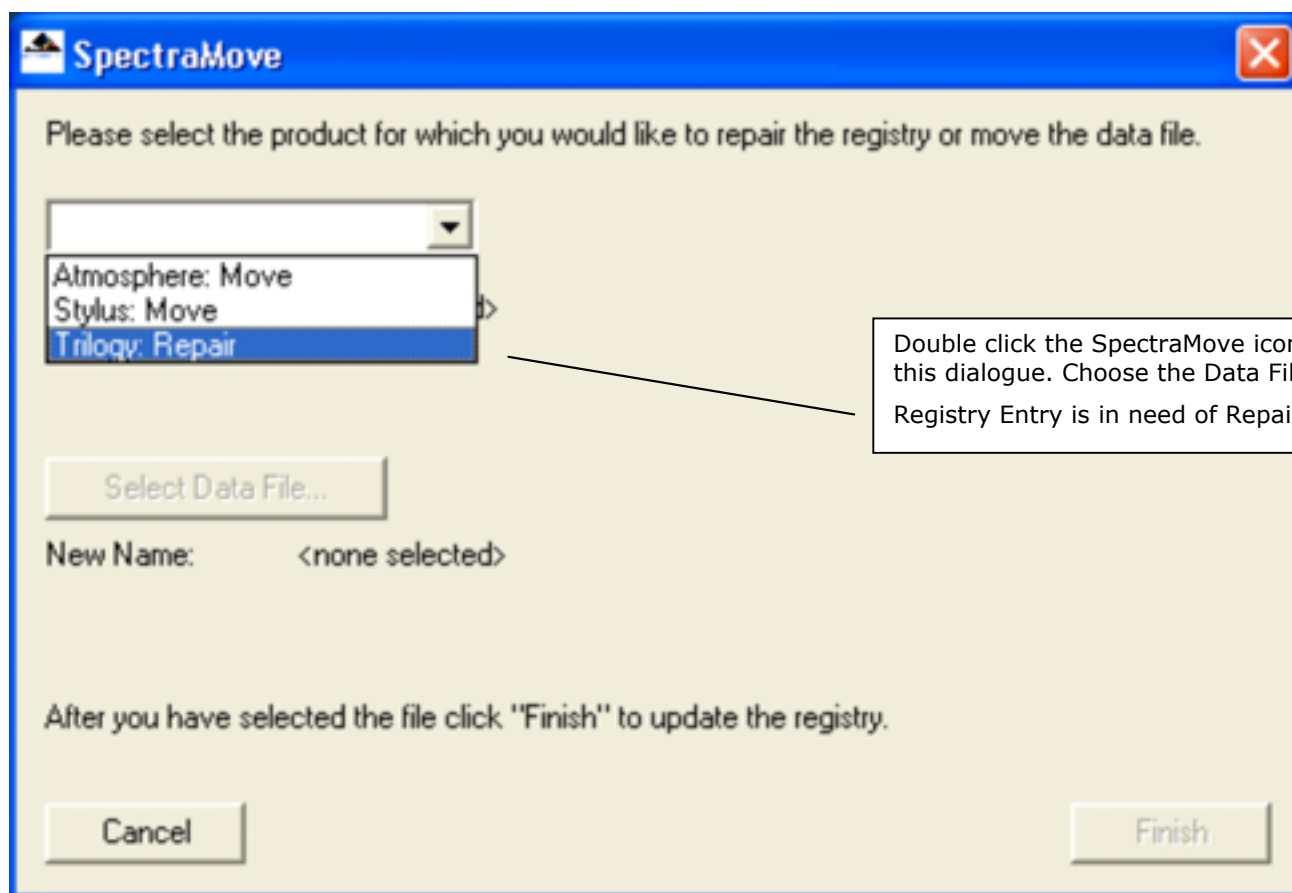
Cancel Finish

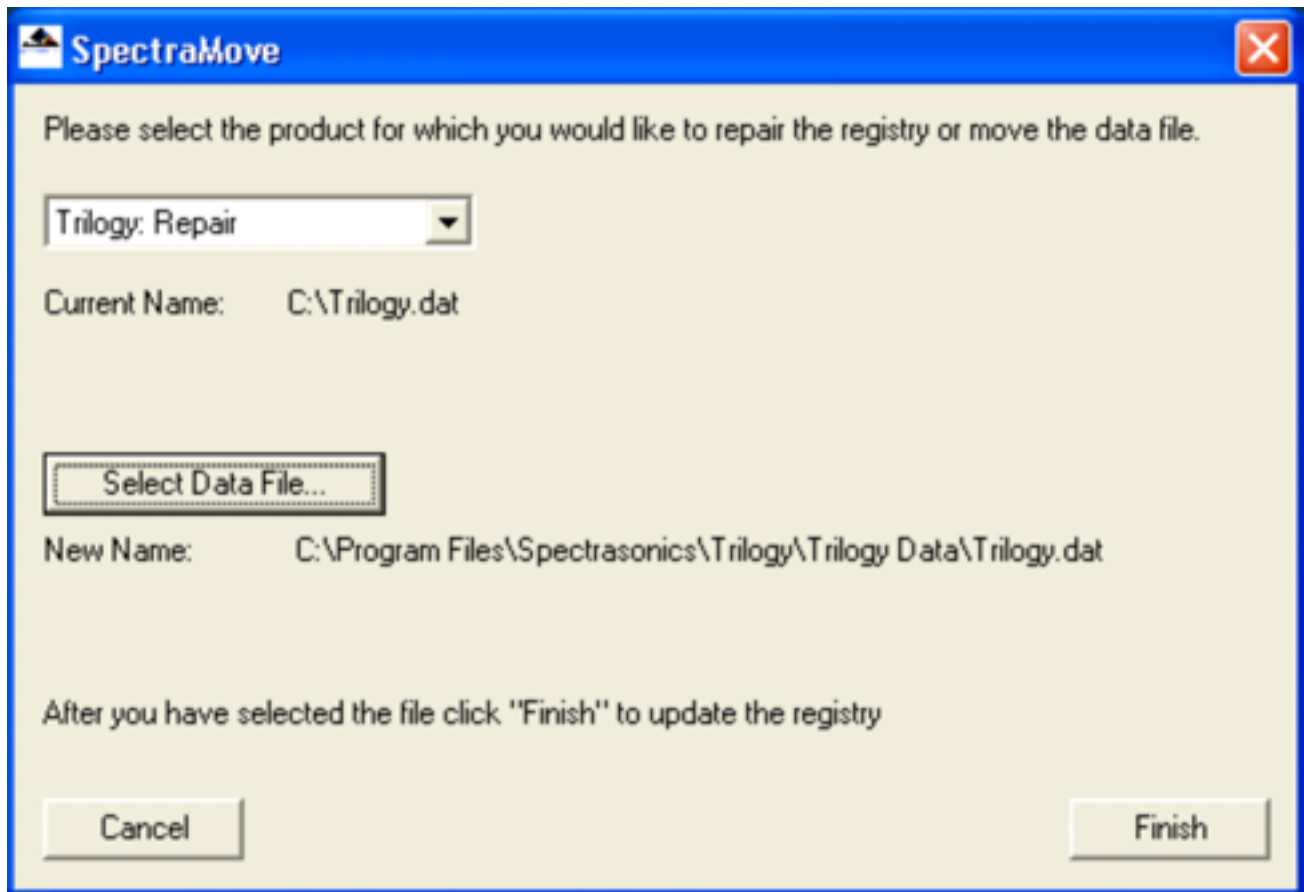
Click the "Finish" box.



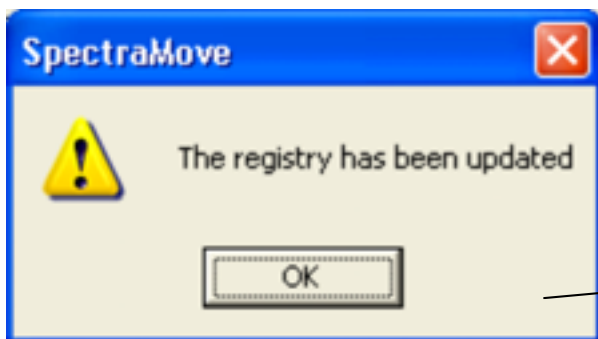
Click "OK" to exit SpectraMove.

## Repairing Data File Registry Entries with SpectraMove





The current name for the Registry location is then shown. Click "Select Data File" then "Finish" to update the Registry.



Click "OK" to exit SpectraMove.

Please let us know if you need additional help with Spectrasonics Data Files within Windows.

You can reach us in the following ways:

**Spectrasonics**  
**P.O.Box 7336**  
**Burbank, CA 91510**

**[www.spectrasonics.net](http://www.spectrasonics.net)    [info@spectrasonics.net](mailto:info@spectrasonics.net)**

**TECH SUPPORT**  
**888-870-4223 (Toll Free)**  
**818-955-8444**  
**FAX 818-955-8613**